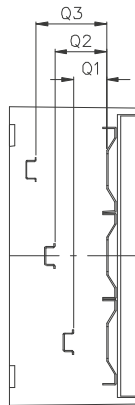
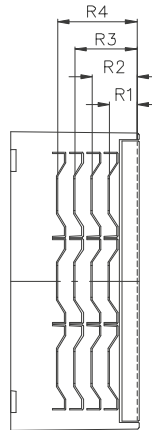


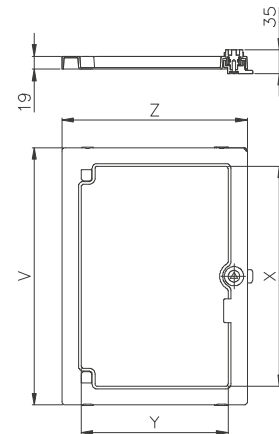
**Distanze barra DIN
pannello sfinestrato**



**Distanze portella
pannello sfinestrato**



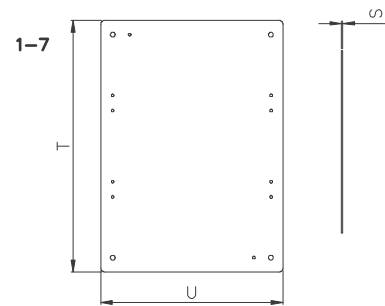
Controporta con serratura a triangolo



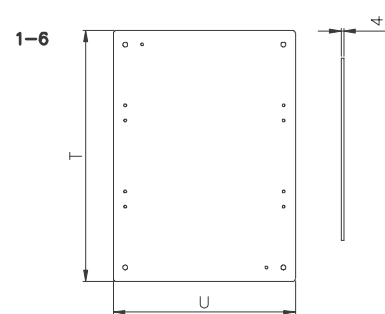
MISURA	MODULI	A	B	C	D	E	F	G	H	I	L	M	W1	W2
I°	---	307	271	171	93	135	188	353	317	224	103	165	---	36
II°	36 (3x12)	432	328	186	130	260	245	478	374	349	160	290	36	62
III°	54 (3x18)	507	436	216	238	335	353	553	482	424	268	365	74	112
IV°	72 (4x18)	657	436	216	238	485	353	703	482	574	268	515	82	124
V°	96 (4x24)	657	546	266	348	485	463	703	592	574	378	515	94	134
VI°	140(5x28)	807	620	322	410	620	537	853	666	724	452	656	138	218

W1: Potenza dissipabile in W con guide DIN e pannelli sfinestrati H 48 mm.
W2: Potenza dissipabile in W con piastra di fondo H 15 mm.

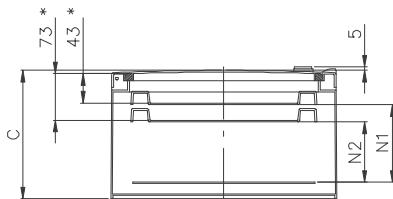
Piastra di fondo metallica



Piastra di fondo isolante

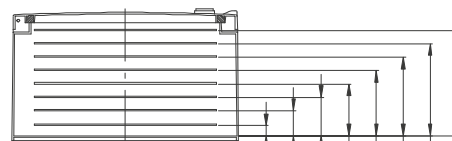


**Distanze fra portella, controporta
e piastra di fondo**



DISTANZE PORTELLA
CONTROPORTA
PIASTRA DI FONDO

**Distanze piastra di fondo fissata al fondo scatola
o su supporti di regolazione (optional)**



DISTANZE PIASTRA DI FONDO
FONDO CASSA
PIASTRA SU SUPPORTI

* Ridurre di 9 mm modelli con portella finestrata.

MISURA	MODULI	N1	N2	P1	P2	P3	P4	P5	P6	P7	Q1	Q2	Q3	R1	R2	R3	R4	R5
I°	---	---	---	---	---	---	---	---	---	---	---	---	---	---	---	---	---	---
II°	36 (3x12)	112	82	43	68	---	---	---	---	---	48	75	---	30	55	---	---	---
III°	54 (3x18)	142	112	43	68	83	---	---	---	---	48	75	102	30	55	80	---	---
IV°	72 (4x18)	142	112	43	68	93	---	---	---	---	48	75	102	30	55	80	---	---
V°	96 (4x24)	192	162	43	68	93	118	143	---	---	48	75	102	30	55	80	105	---
VI°	140(5x28)	248	218	43	68	93	118	143	168	193	48	75	102	30	55	80	105	130

Tutte le dimensioni in mm.

MISURA	S	T	U	V	Z	X	Y
I°	1.5	239	207	---	---	---	---
II°	1.5	364	264	373	267	318	210
III°	1.5	439	372	447	377	392	320
IV°	1.5	589	372	597	377	542	320
V°	1.5	589	482	597	487	542	430
VI°	2.0	739	556	747	581	692	504

Staffa zincata/Inox

